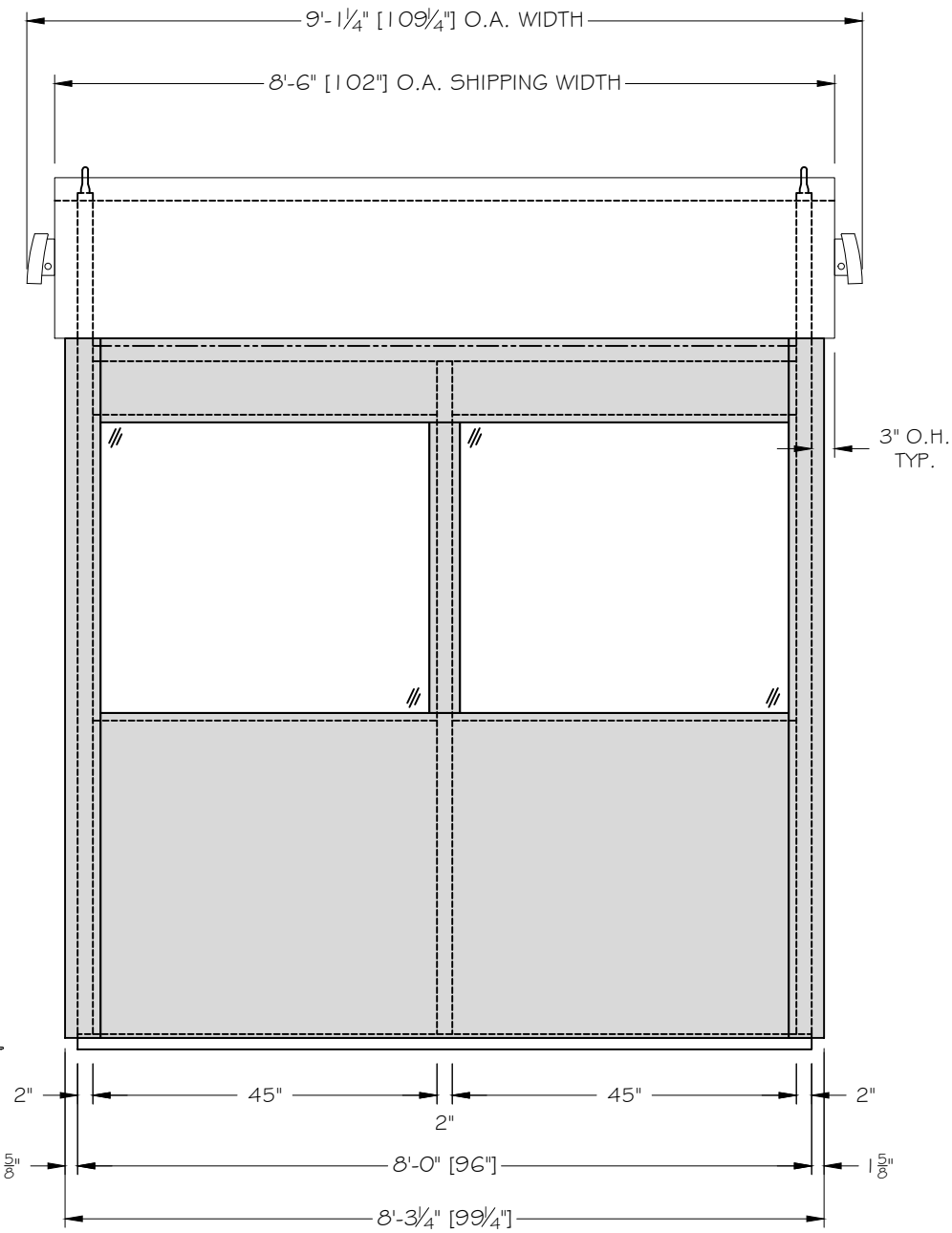
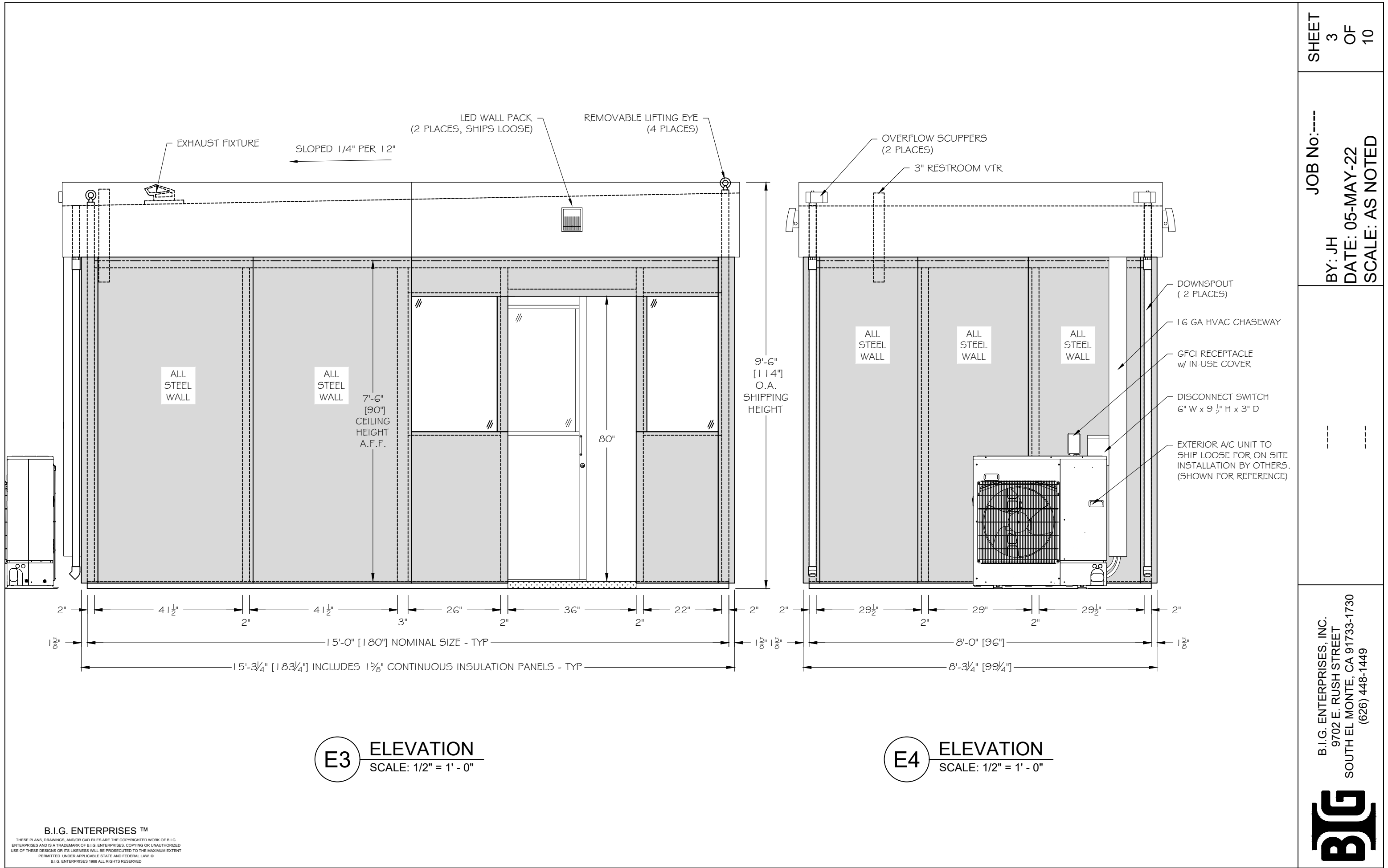


**E1** ELEVATION  
SCALE: 1/2" = 1'-0"



**E2** ELEVATION  
SCALE: 1/2" = 1'-0"

<b>SHEET</b> 2 OF 10	<b>JOB No:----</b>  <b>BY: JH</b> <b>DATE: 05-MAY-22</b> <b>SCALE: AS NOTED</b>	----- -----	<b>B.I.G. ENTERPRISES, INC.</b> 9702 E. RUSH STREET SOUTH EL MONTE, CA 91733-1730 (626) 448-1449

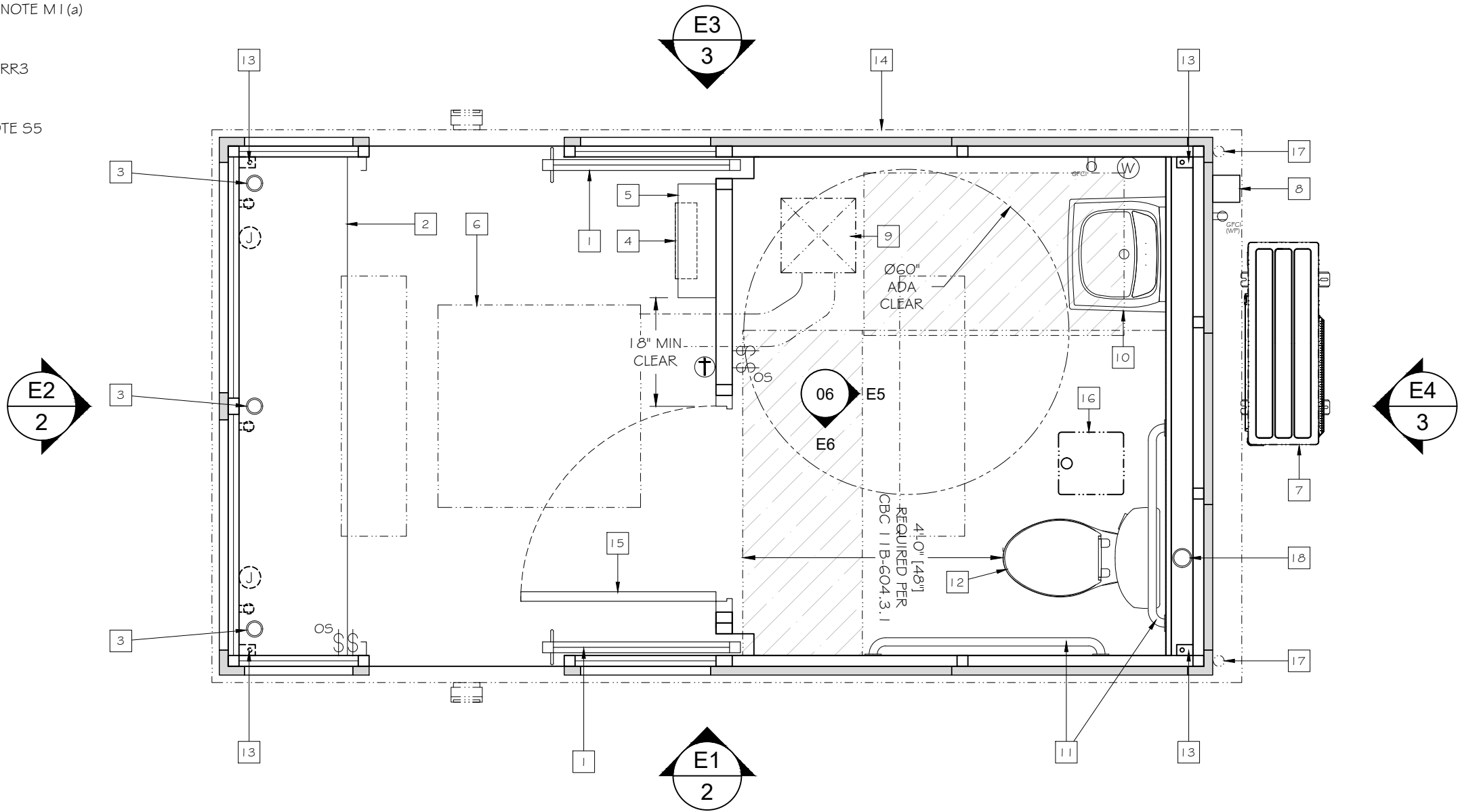


FLOOR PLAN LEGEND:

- 1 36" x 80" SLIDING DOORS - GENERAL NOTE D I
- 2 20" SHELF - GENERAL NOTE A I
- 3 3" CORD ACCESS HOLE (3 TOTAL)
- 4 LOAD CENTER - ELECTRICAL NOTE E I
- 5 ELECTRICAL CABINET - ELECTRICAL NOTE E I
- 6 INTERIOR HVAC UNIT - MECHANICAL NOTE M I (a)
- 7 EXTERIOR HVAC UNIT - MECHANICAL NOTE M I (b)
- 8 16 GA. HVAC CHASEWAY
- 9 12" x 12" SUPPLY GRILLE - MECHANICAL NOTE M I (a)
- 10 SINK - GENERAL NOTE RR3
- 11 GRAB BAR (2 PLACES) - GENERAL NOTE RR3
- 12 TOILET - GENERAL NOTE RR3
- 13 ANCHOR CLIPS (4 TOTAL) - GENERAL NOTE S5
- 14 OVERHANG
- 15 INTERIOR STEEL DOOR w/COAT HOOK
- 16 EXHAUST FAN - GENERAL NOTE RR1
- 17 DOWNSPOUT (2 TOTAL)
- 18 3" ROOF JACK - GENERAL NOTE RR1

NOTE:

ALL RESTROOM EQUIPMENT TO BE SHIPPED LOOSE FOR INSTALLATION ON SITE BY OTHERS. B.I. G. TO PROVIDE BRACING HARD POINTS FOR SINK AND ANY REQUESTED GRAB BARS. ANY OTHER BRACING POINTS OR CUTOUTS REQUIRED MUST BE SPECIFIED PRIOR TO B.I. G. PRODUCTION RELEASE.



FLOOR PLAN  
SCALE: 1/2" = 1'-0"

B.I.G. ENTERPRISES™

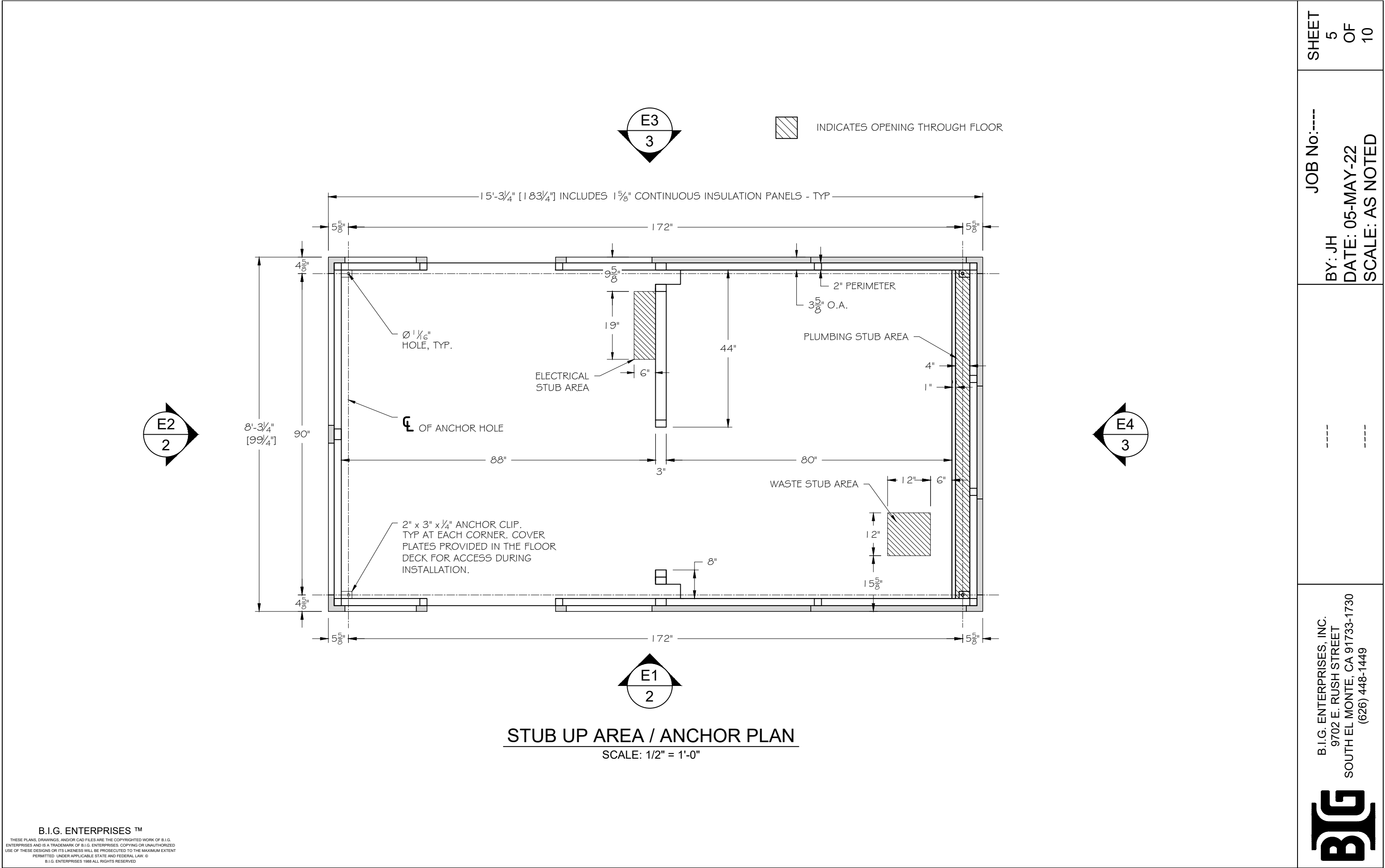
THESE PLANS, DRAWINGS, AND/OR CAD FILES ARE THE COPYRIGHTED WORK OF B.I.G. ENTERPRISES AND IS A TRADEMARK OF B.I.G. ENTERPRISES. COPYING OR UNAUTHORIZED USE OF THESE DESIGNS OR ITS LIKENESS WILL BE PROSECUTED TO THE MAXIMUM EXTENT PERMITTED UNDER APPLICABLE STATE AND FEDERAL LAW. © B.I.G. ENTERPRISES 1988 ALL RIGHTS RESERVED

SHEET  
4  
OF  
10

JOB No:---  
BY: JH  
DATE: 05-MAY-22  
SCALE: AS NOTED

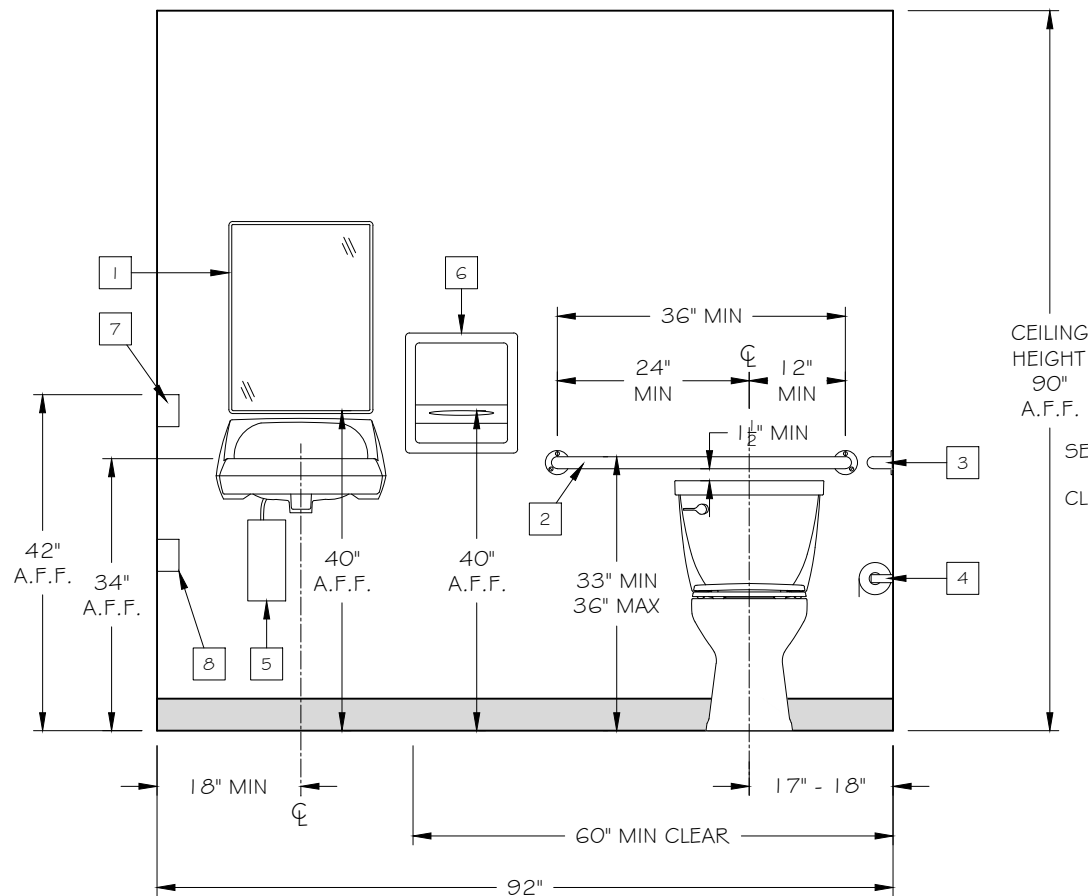
B.I.G. ENTERPRISES, INC.  
9702 E. RUSH STREET  
SOUTH EL MONTE, CA 91733-1730  
(626) 448-1449



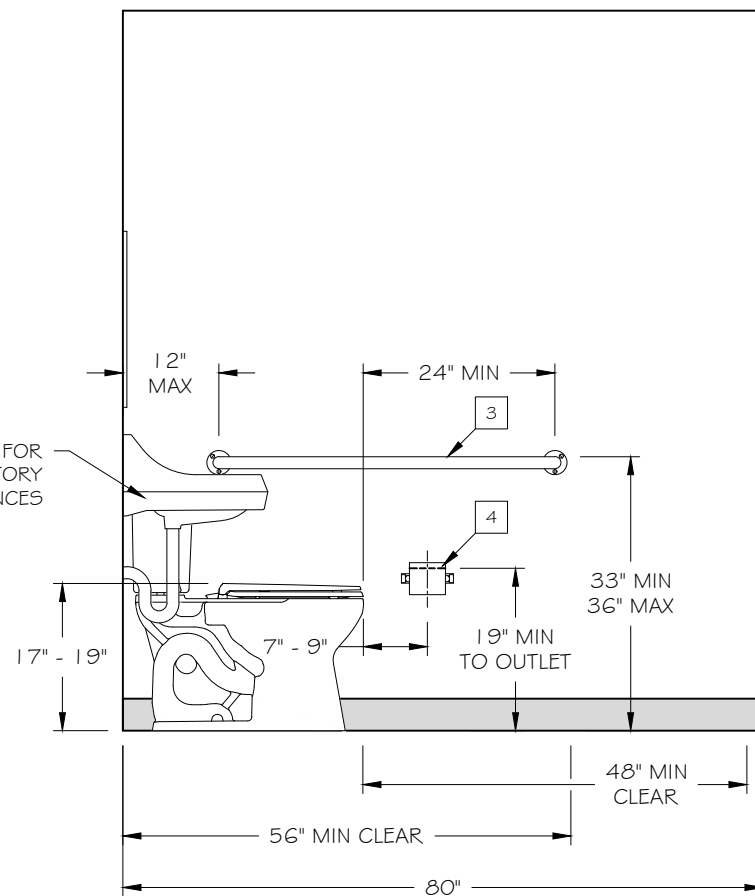


RESTROOM ELEVATION LEGEND:

- |   |                  |   |                       |   |                           |
|---|------------------|---|-----------------------|---|---------------------------|
| 1 | 18" x 24" MIRROR | 4 | TOILET PAPER HOLDER   | 7 | GFCI RECEPTACLE           |
| 2 | 36" GRAB BAR     | 5 | WATER HEATER          | 8 | WATER HEATER JUNCTION BOX |
| 3 | 42" GRAB BAR     | 6 | PAPER TOWEL DISPENSER |   |                           |



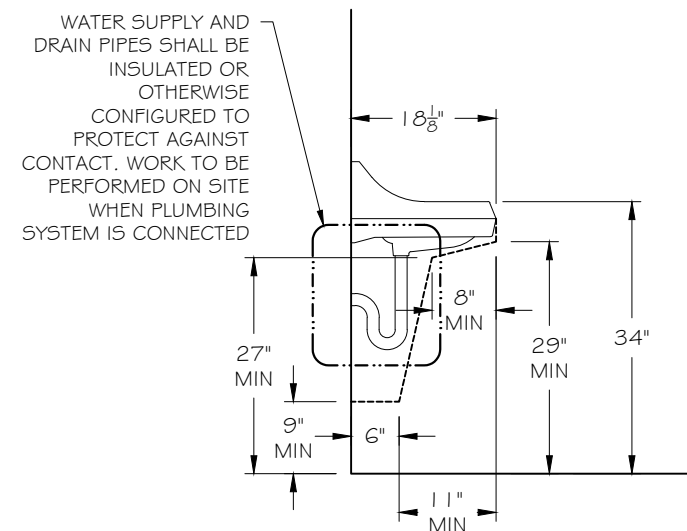
**E5** ELEVATION  
SCALE: 1/2" = 1' - 0"



**E6** ELEVATION  
SCALE: 1/2" = 1' - 0"

NOTE:

ALL RESTROOM EQUIPMENT TO BE SHIPPED LOOSE FOR INSTALLATION ON SITE BY OTHERS. B.I. G. TO PROVIDE BRACING HARD POINTS FOR SINK AND ANY REQUESTED GRAB BARS. ANY OTHER BRACING POINTS OR CUTOUTS REQUIRED MUST BE SPECIFIED PRIOR TO B.I. G. PRODUCTION RELEASE.



**AA** LAVATORY CLEARANCES  
SCALE: 1/2" = 1' - 0"

HVAC CONDENSATION  
TERMINATION POINT

REMOVABLE  
WALL PANELS

NON-REMOVABLE  
FIXTURE MOUNTING  
POINT

TYPICAL DWV & SUPPLY  
PIPING SUPPLIED AND  
INSTALLED BY OTHERS

REMOVABLE  
WALL PANELS

TYPICAL DWV & SUPPLY  
PIPING ARE STUBBED UP BEHIND  
REMOVABLE WALL PANELS

RESTROOM FLOOR IS STEEL COVERED WITH  
SMOOTH, HARD NONABSORBENT RUBBER TILES

ALL FIXTURES SHIP LOOSE  
FOR INSTALLATION ON SITE BY OTHERS

RESTROOM WALLS ARE PAINTED GALVANIZED  
STEEL THAT IS SMOOTH, HARD AND  
NONABSORBENT FROM THE FLOOR TO CEILING.

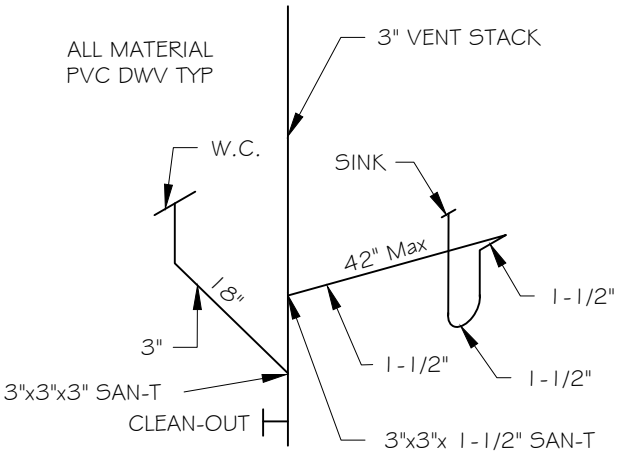
DWV PIPING MUST BE INSTALLED IN SLAB  
NO BELOW FLOOR ACCESS

SEE APPROVED SHOP DRAWINGS  
FOR STUB UP LOCATIONS

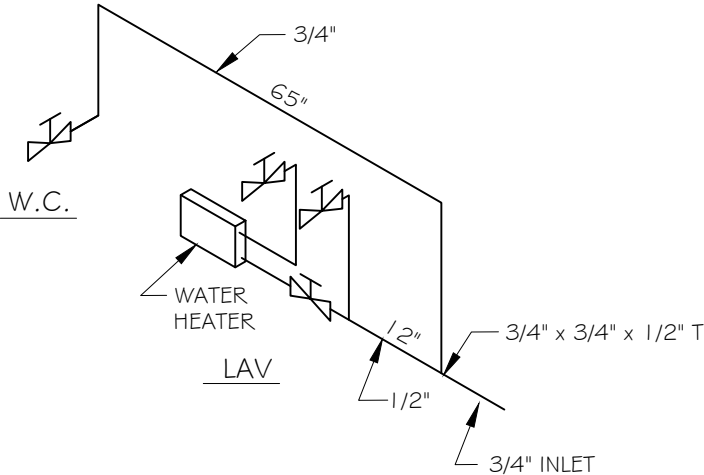
NOTE:  
THIS DRAWING IS MEANT TO SHOW THE TYPE OF  
PLUMBING WORK REQUIRED TO CONNECT THE GUARD HOUSE.  
ACTUAL PLANS, PERMITS AND INSTALLATION ARE BY  
OTHERS.

TYPICAL PLUMBING INSTALLATION

SCALE: 1/2" = 1' - 0"



SANITARY STACK DIAGRAM  
(BY OTHERS ON SITE)



WATER RISER DIAGRAM  
(BY OTHERS ON SITE)

PLUMBING FIXTURE COUNT			
FIXTURE	QTY	DRAIN UNITS	EXTENDED
WATER CLOSET	1	4	4
LAVATORY	1	1	1
TOTAL DRAIN UNITS			5

INLET SIZES			
FIXTURE	QTY	FLOW RATE	EXTENDED
WATER CLOSET	1	1.28 GPM	1.28 GPM
LAVATORY	1	2.0 GPM	2.0 GPM
TOTAL FLOW RATE			3.28 GPM

WATER SUPPLY FIXTURE UNITS			
FIXTURE	QTY	WSFU	MIN. BRANCH PIPE SIZE
WATER CLOSET	1	2.5	1/2"
LAVATORY	1	1.0	1/2"
TOTAL		3.5	3/4"
System will require a minimum pressure range of 40 to 49 psi with a maximum development length of 400 ft with a 3/4" dia. supply.			

SHEET  
7  
OF  
10

JOB No:---  
BY: JH  
DATE: 05-MAY-22  
SCALE: AS NOTED

---

B.I.G. ENTERPRISES, INC.  
9702 E. RUSH STREET  
SOUTH EL MONTE, CA 91733-1730  
(626) 448-1449



ELECTRICAL NOTES:

- E1. UNIT TO HAVE **ONE 3 WIRE SINGLE PHASE, 12 POLE, 125 AMP RATED, 120/240 VOLT** LOAD CENTER FLUSH MOUNTED IN AN ELECTRICAL CABINET ON THE RESTROOM PARTITION WALL; THIS MAIN PANEL TO BE LABELED "PA".
- E2. ALL ELECTRICAL EQUIPMENT TO BE U.L. LISTED AND ALL WIRING TO BE PER CURRENT PUBLISHED NEC STANDARDS. ALL CONDUCTORS TO BE COPPER, WITH A MINIMUM SIZE OF THHN #12 SOLID COPPER. EXPOSED WIRING TO BE IN SURFACE MOUNTED EMT CONDUIT. CONCEALED WIRING TO BE IN FLEXIBLE ALUMINUM CONDUIT. FINAL POWER CONNECTION AND GROUNDING TO BE DONE ON SITE BY OTHERS. ALL WORK TO BE DONE BY A QUALIFIED ELECTRICIAN IN ACCORDANCE WITH ALL APPLICABLE LOCAL CODES.

A. ALL CIRCUITS TO BE GROUNDED.

B. ALL STEEL EQUIPMENT AND EXPOSED STRUCTURAL STEEL TO BE BONDED TO ELECTRICAL SYSTEM.
- E3. UNIT TO HAVE **(3)** 125V DUPLEX RECEPTACLES UNDER THE SHELF.
- E4. UNIT TO HAVE **(2)** SINGLE GANG DATA/COMM J-BOXES UNDER FRONT SHELF. EACH WITH Ø1/2" CONDUIT RUN TO THE STUB AREA.
- E5. UNIT TO HAVE **(1)** 125V GFCI DUPLEX OUTLET MOUNTED IN THE RESTROOM AT 42" A.F.F. & **(1)** 125V EXTERIOR WEATHER-RESISTANT GFCI DUPLEX RECEPTACLE w/ A WEATHERPROOF "HEAVY DUTY" IN-USE COVER ON THE EXTERIOR REAR WALL FOR HVAC SERVICING **(SEE M1C)**.
- E6. ALL EMPTY JUNCTION BOXES TO HAVE PULL STRINGS UNLESS NOTED OTHERWISE
- E7. ALL HEIGHT CALLOUTS TO BE MEASURED TO TOP OF RECEPTACLE/JUNCTION BOXES, UNLESS NOTED OTHERWISE.
- E8. ALL DETAILS, SECTIONS, AND NOTES SHOWN ON THE DRAWINGS ARE INTENDED TO BE TYPICAL AND SHALL APPLY TO SIMILAR SITUATIONS ELSEWHERE, UNLESS NOTED OTHERWISE. NOTES AND DETAILS ON THE DRAWINGS TAKE PRECEDENCE OVER THE GENERAL NOTES AND TYPICAL DETAILS.
- E9. UNIT TO HAVE **(1)** SINGLE GANG JUNCTION BOX MOUNTED IN THE RESTROOM TO BE WIRED SEPARATELY FOR 240V AND IS PROVIDED **FOR THE ELECTRICAL CONNECTION OF THE WATER HEATER**. THE WATER HEATER IS SHIPPED LOOSE, AND IS TO BE INSTALLED AS PART OF THE OVERALL PLUMBING INSTALLATION, BY OTHERS.

MECHANICAL NOTES:

- M1. THE MAIN GUARD AREA OF THE UNIT TO BE SERVICED BY A DUCTLESS CEILING CASSETTE SPLIT SYSTEM. HVAC UNIT TO BE A **MITSUBISHI MODEL NO. PUZ-A24NHA7 (EXTERIOR UNIT) AND PLA-A24EA7** (INTERIOR UNIT w/DUCT TO RESTROOM) OR EQUAL.

A. THE HVAC INTERIOR AIR HANDLER UNIT, **A BRANCH DUCT TO THE RESTROOM**, REFRIGERANT LINES AND ELECTRICAL TO SHIP FULLY INSTALLED IN A CHASE TO THE CONDENSER. CHASE TO BE 1/2" GA GALVANIZED STEEL PAINTED TO MATCH THE BOOTH. **CONDENSATE DRAIN LINE TO BE ROUTED TO THE PLUMBING WALL, DRAIN CONNECTION ONSITE BY OTHERS.**

B. THE HVAC EXTERIOR CONDENSER UNIT WILL SHIP LOOSE. FINAL INSTALLATION OF THE HVAC SYSTEM INCLUDING: CONNECTION OF REFRIGERANT LINES TO THE INTERIOR AND EXTERIOR UNITS, EVACUATING & CHARGING, PROGRAMING THE THERMOSTAT, AND DIAGNOSTICS TEST MUST BE DONE ON SITE. INSTALLATION AND MAINTENANCE OF THE ENTIRE SYSTEM MUST BE PERFORMED BY A CERTIFIED HVAC CONTRACTOR IN ORDER TO MAINTAIN WARRANTY COVERAGE.

C. THE HVAC EXTERIOR UNIT WILL INCLUDE **A 60 AMP NON-FUSED DISCONNECT SWITCH & AN EXTERIOR WEATHER TIGHT 125V GFCI RECEPTACLE w/ IN-USE COVER FOR SERVICING.**
- M2. UNIT TO INCLUDE A **BROAN BROA80** (80 CFM) EXHAUST FAN w/BROAN 636 ROOF CAP (OR EQUAL).

PANEL SCHEDULE														
PANEL NAME: TBD				VOLTS: 120 / 240V				MAIN TYPE:				MAIN LUG		
MOUNTING: FLUSH				WIRES: THREE				BUS RATING:				125A		
ENCLOSURE: NEMA 1				PHASE: SINGLE				MAIN BREAKER RATING:				NONE		
CKT	DESCRIPTION			C.B. AMPS	C.B. POLES	A		B		C.B. POLES	C.B. AMPS	DESCRIPTION	CKT	
1	HVAC			25A	2	1035	108			1	20A	(2) INT & (2) EXT LIGHTS; EXH FAN	2	
3	HVAC							1035	540	1	20A	(3) DUPLEX RCPT FRONT	4	
5	WATER HEATER			20A	2	1750	360			1	20A	(2) GFCI, RR & EXT.	6	
7	WATER HEATER							1750						8
9														10
11													12	
				TOTAL A LEG		3253		3325		TOTAL B LEG				
						TOTAL WATTS		6578						
						TOTAL x 125%		8222.5						
						WATTS / 240V		34.3		AMPS				

LIGHTING SCHEDULE						
ITEM	DESCRIPTION	MANUFACTURER	MODEL NO.	TYPE	QTY	NOTES
1	1' x 4' LED FIXTURE	MAXLITE	MLFP14G420WC5	20W	2	OCCUPANCY SENSOR
2	LED WALL PACK	LUMARK	XTROR1B-PC1	12W	1	INTEGRAL PHOTOCELL

MECHANICAL EQUIPMENT SCHEDULE							
ITEM	DESCRIPTION	MANUFACTURER	MODEL NO.	BTU/h		CEER / HSPF RATING	NOTES
				COOL	HEAT		
M1	CONDENSER	MITSUBISHI	PUZ-A24NHA7	24,000	26,000	24.2 / 11.2	
M2	CEILING CASSETTE	MITSUBISHI	PLA-A24EA7				
M3	EXHAUST FAN	BROAN	BROA80				80 CFM

SHEET 8 OF 10

JOB No:---  
BY: JH  
DATE: 05-MAY-22  
SCALE: AS NOTED

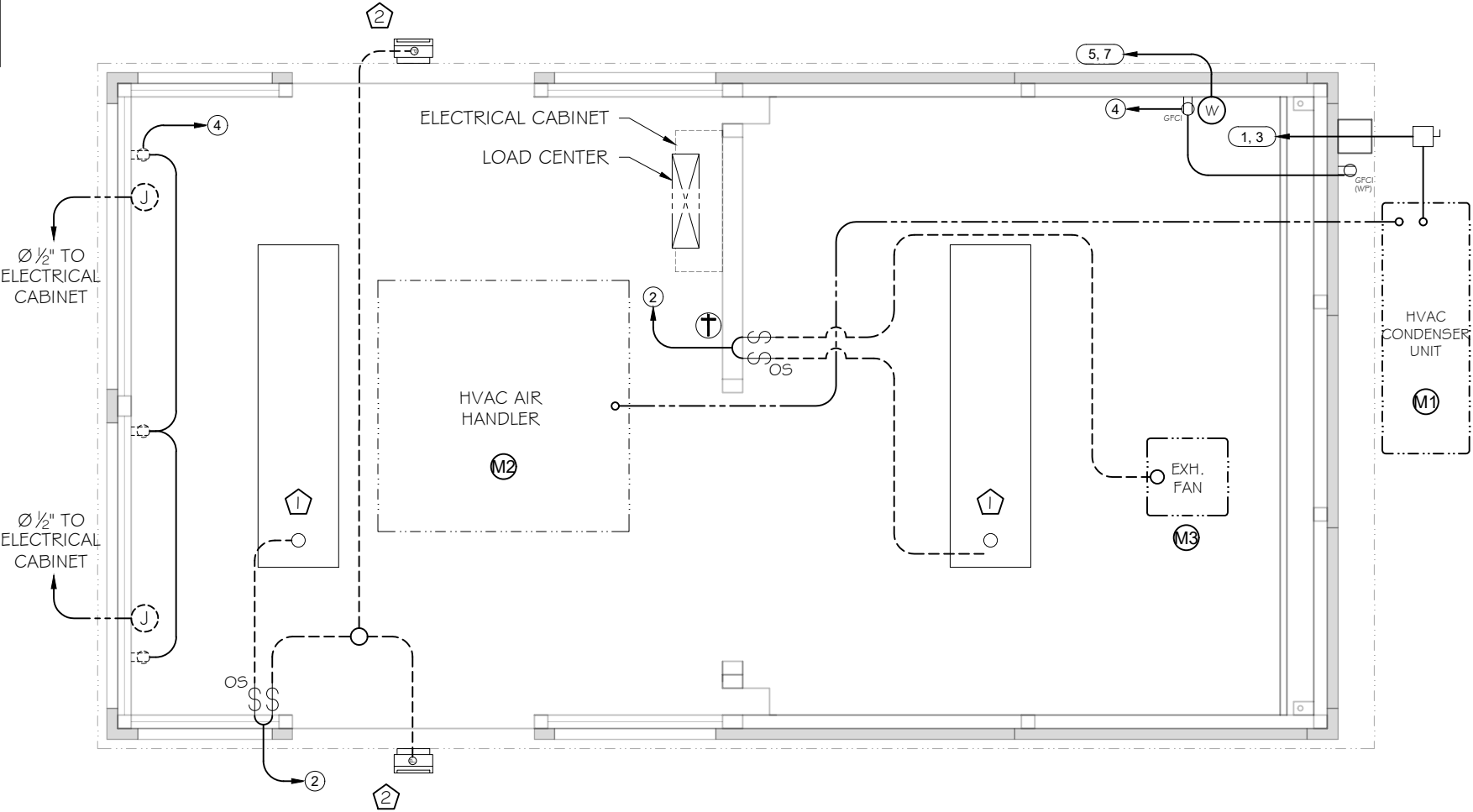
---

B.I.G. ENTERPRISES, INC.  
9702 E. RUSH STREET  
SOUTH EL MONTE, CA 91733-1730  
(626) 448-1449



LEGEND	
	1 25v DUPLEX OUTLET
	1 25v GFCI DUPLEX OUTLET
	1 25V WEATHER-RESISTANT GFCI DUPLEX RCPT. w/ WEATHERPROOF COVER
	SINGLE GANG J-BOX
	WATER HEATER J-BOX
	THERMOSTAT
	60A DISCONNECT SWITCH, UN-FUSED
	OCCUPANCY SENSOR
	EXTERIOR LIGHT SWITCH
	SWITCH LEG

- NOTE:
1. ALL WIRING TO BE A MINIMUM OF THHN #12 SOLID COPPER.
  2. ALL CIRCUITS TO BE GROUNDED.
  3. ALL STEEL EQUIPMENT AND EXPOSED STRUCTURAL STEEL TO BE BONDED TO ELECTRICAL SYSTEM.



**E1**  
2

**ELECTRICAL PLAN**  
SCALE: 1/2" = 1'-0"

GENERAL NOTES:

STRUCTURAL:

- S1.

Frame members to consist of 2" x 2" x .083" and 2" x 3" x .083" steel tube.
- S2.

Unit to have half glazed 16 ga galvanized steel walls with 16 ga galvanized interior liners.
- S3.

Walls to have a R-9.6 insulation value with a layer of continuous R-9.6 insulation encapsulated in an exterior 16 ga galvanized steel wall. Overall insulation value is R-19.6.
- S4.

Unit to have a 12 ga AG53 galvanized steel floor covered with 1/4" thick x 20" square, black commercial polyvinyl chloride interlocking tiles with a 4" high black perimeter cove molding. Floor to be mounted on a 2" tall galvanized steel tube frame.
- S5.

Unit to have four interior anchor clips. Four 5/8" Hilti KB-TZ bolts (LARR 25701, ICC-ESR-1917) with 3 1/8" minimum embedment in 2500 psi concrete (or equal) are required for placement of booth (Anchor bolts are not included). Concrete to be level. If sloped, slope towards drain opening(s) on booth. Concrete and booth installation shall be by others. For a 3-1/8" embedment the foundation/slab design must be a minimum of 5" thick and be sized to allow for a minimum distance of 6-1/2" from the edge of the slab to the center line of the anchors for maximum strength.
- S6.

Floor will require a ramp the full width of one door opening with a slope of 1" to 1'- 0" to meet ADA handicap access requirements (ramp by others onsite) or alternatively the booth can be recessed 2" into the slab.

**CAUTION: Please contact your sales representative for additional information when planning on recessing the booth into the slab.**

ROOF:

- R1.

Unit to have a 21" tall fascia, 3" overhang on front & sides, 7" on rear with a 16ga galvanized steel roof sloped to drain through two rear mount 1-1/2" PVC downspouts and overflow scuppers.
- R2.

Roof to have a R-19 insulation value.
- R3.

Unit to have four removable lifting eyes (3/4" dia. shank, eye is 1-1/2" I.D.) mounted on the roof. Lifting eyes are designed for a STRAIGHT VERTICAL LIFT ONLY. Spreader bars must be used when lifting booth to ensure this vertical lift. All warranties will be void if not lifted in this manner.

DOORS & WINDOWS:

- D1.

Unit to have two 36" x 80" commercial grade steel framed slide doors constructed of 16 ga steel panels with steel tube frames. Doors to be top hung, in a steel track, on a minimum of eight 2 1/4" steel ball bearing rollers with stainless steel lower guide, mortise hook type lock, stainless steel pull handles welded on to the frame, and complete weather stripping. Doors to be keyed alike.
- W1.

Unit to have 3/4" dual pane insulated tempered, safety glass with a make up of 1/4" tinted, 1/4" air space, 1/4" clear with Low-E coating.

A.

Customer to specify the color of tint prior to B.I.G. production release. Standard tint colors are Bronze or Gray.

B.

If customer does not provide a tint selection, B.I.G. will choose a standard tint color that best complements the paint color selected.

RESTROOM:

- RR1.

Unit to have restroom area with partition wall, all steel swing door with privacy lock, exhaust fixture (min 80 cfm, Broan #A80 or equal) and one installed 3" roof jack with 3" PVC tube vent stubbed 6" below ceiling. Verification of vent sizing, and vent installation to be by others in coordination with the local applicable codes.
- RR2.

All piping is to be supplied and installed on site by others. The water closet shall not exceed 1.28 GPF. The lavatory flow rate shall not exceed 0.5 gpm at 60 psi. Total flow shall not exceed 0.25 gallons per activation.
- RR3.

The following equipment (or equals) will be shipped loose for on site installation by others:

• Standard lavatory: Kohler #K2005-0

• Faucet set: Delta 86T 1153

• Toilet: Kohler #K31621

• Toilet seat: PROFLO-PFTSCOF2000WH

• 42" Grab Bar: Bobrick S.S. 6806-42

• 36" Grab Bar: Bobrick S.S. 6806-36

• TP holder: Bobrick S.S. B-6857

• Paper towel holder: Bobrick S.S. B-262

• Coat hook, double: Bobrick S.S., B-6727

• Soap dispenser: Bobrick S.S., B-2111

• Mirror: 18" x 24" Bobrick #B-1651 1824

• Water Heater: 240v 3.5KW EEMAX SPEX35

ACCESSORIES:

- A1.

Unit to have one 20" deep front shelf with 3" cord access holes with grommets for drop down cords. Shelf to be 16 ga steel, painted the same color as the booth interior and mounted at 34" above finished floor.
- A2.

Shelf to be rated for a 250 lb. load.

WEATHER PROOFING & FINISH:

- F1.

All exposed steel surfaces except roof deck to be coated with two component high solids polyurethane rust inhibitive primer, and two component high solids polyurethane finish coat.
- F2.

Unit to be painted one color inside and out.

A.

Customer to provide paint color selection prior to manufacturing.
- F3.

The ceiling is to be an acoustic tile ceiling. The "T" grid will be painted the same color as the booth interior and the tiles will be white. Unit to have a ceiling height of 90" A.F.F.
- F4.

Roof to be fully weather sealed with a three step elastomeric membrane as follows:

A.

All seams are sealed with a high bond seam sealing tape.

B.

The entire roof deck is then coated with a liquid applied one-part polyurethane coating forming a tough waterproof, weather-resistant elastomeric coating.

C.

The entire deck surface finished with a white heat reflective polyurethane coating. The coating meets Energy Star reflectance and emissivity performance requirements, has an SRI of 95, and is approved by the Cool Roof Rating Council (CRRC).

SHEET  
10  
OF  
10

JOB No:---  
  
BY: JH  
DATE: 05-MAY-22  
SCALE: AS NOTED

---  
---

B.I.G. ENTERPRISES, INC.  
9702 E. RUSH STREET  
SOUTH EL MONTE, CA 91733-1730  
(626) 448-1449

