

**PVDF (Kynar 500®) Paint System**



Snowdrift White (W81)<sup>2,6</sup>



Linen White (81)<sup>1,2,3</sup>



Sandstone (W51)<sup>2</sup>



Parchment (W74)<sup>2,6</sup>



Taupe (74)<sup>2</sup>



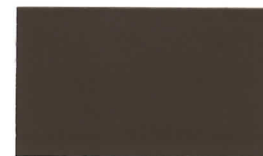
Khaki (88)<sup>2</sup>



Mansard Brown (133)<sup>2</sup>



Medium Bronze (H4)<sup>2</sup>



Weathered Copper (W50)<sup>2,6</sup>



Dark Bronze (50)<sup>2</sup>



Ash Grey (25)<sup>2</sup>



Old Town Grey (W25)<sup>2,6</sup>



Old Zinc Grey (W29)<sup>2,6</sup>



Slate Grey (W38)<sup>2,6</sup>



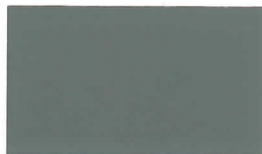
Matte Black (106)<sup>2</sup>



Aged Copper (65)<sup>2</sup>



Patina Green (W58)<sup>2,6</sup>



Hemlock Green (M7)<sup>2,6</sup>



Classic Green (66)<sup>2</sup>



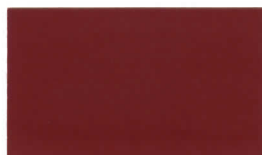
Felt Green (W66)<sup>2,6</sup>



Patriot Red (73)<sup>2</sup>



Terra Cotta (W72)<sup>2,6</sup>



Colonial Red (W75)<sup>2,6</sup>



Brandywine (P8)<sup>2</sup>



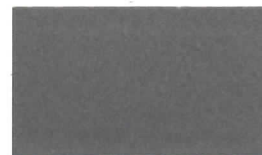
River Teal (59)<sup>2</sup>



Metallic Silver (K7)<sup>2,4,5</sup>



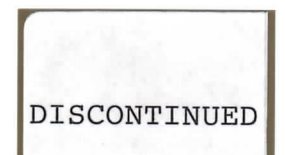
Champagne Metallic (168)<sup>2,4,5</sup>



Mistique Plus (W31)<sup>2,4,5</sup>



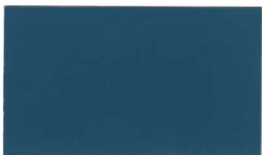
Copper Penny (W92)<sup>2,4,5</sup>



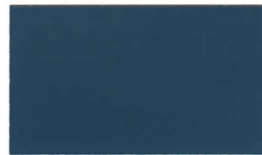
DISCONTINUED



Tahoe Blue (W71)<sup>2,6</sup>



Ocean Blue (35)



Regal Blue (W35)<sup>2,6</sup>



All Colors are Listed with ENERGY STAR® for Steep Slope Applications



<sup>1</sup> Meets or Exceeds Low Slope ENERGY STAR® Requirements

<sup>2</sup> CRRG Listed for Steep Slopes

<sup>3</sup> CRRG Listed for Low Slopes

<sup>4</sup> An Up-Charge will Apply

<sup>5</sup> Metallic Directional Finish

<sup>6</sup> Low Gloss

[www.metalsales.us.com](http://www.metalsales.us.com)

**24**  
GAUGE

**45 Year Paint Warranty**

All colors carry a 45 year limited paint warranty  
Color selections are close representations but are limited by  
printing and viewing conditions. Actual samples are available by request.

PVDF (Kynar 500®) Color	SR	TE	SRI
Aged Copper (65)	0.32	0.85	32
Antique Patina (M1)	0.38	0.85	40
Ash Grey (25)	0.38	0.86	41
Brandywine (P8)	0.26	0.85	24
Champagne Metallic (168)	0.47	0.85	53
Classic Green (66)	0.32	0.86	33
Colonial Red (W75)	0.35	0.86	37
Copper Penny (W92)	0.45	0.85	50
Dark Bronze (50)	0.30	0.86	30
Felt Green (W66)	0.31	0.84	31
Hemlock Green (M7)	0.36	0.85	38
Khaki (88)	0.35	0.87	37
Linen White (81)	0.73	0.86	89
Mansard Brown (133)	0.30	0.87	31
Matte Black (106)	0.27	0.86	26
Medium Bronze (H4)	0.30	0.87	31
Metallic Silver (K7)	0.60	0.77	68

PVDF (Kynar 500®) Color	SR	TE	SRI
Mistique Plus (W31)	0.34	0.82	34
Ocean Blue (35)	0.29	0.86	29
Old Town Grey (W25)	0.40	0.85	43
Old Zinc Grey (W29)	0.42	0.85	46
Parchment (W74)	0.41	0.86	45
Patina Green (W58)	0.46	0.85	51
Patriot Red (73)	0.46	0.86	52
Regal Blue (W35)	0.27	0.86	26
River Teal (59)	0.29	0.86	29
Sandstone (W51)	0.54	0.86	63
Slate Grey (W38)	0.30	0.85	30
Snowdrift White (W81)	0.65	0.85	78
Tahoe Blue (W71)	0.30	0.86	30
Taupe (74)	0.29	0.84	28
Terra Cotta (W72)	0.39	0.85	42
Weathered Copper (W50)	0.32	0.84	32

For more information go to [www.metalsales.us.com](http://www.metalsales.us.com)

COOL ROOF INFORMATION	PVDF (KYNAR 500®) PAINT SYSTEM
<p><b>SR - Solar Reflectance</b> is the fraction of solar energy reflected by a surface ranging from 0.00-1.00, measured per ASTM C 1549.</p> <p><b>TE - Thermal Emittance</b> is the relative ability of the roof surface to radiate absorbed heat energy ranging from 0.00-1.00, measured per ASTM C 1371.</p> <p><b>SRI - Solar Reflectance Index</b> is a measure of a surface's ability to reflect solar heat. It is a calculated value obtained from SR and TE, calculated per ASTM E 1980.</p>	<p><b>Color side of panel:</b> Primer shall have a dry film thickness of 0.20-0.30 mil. Top coat shall have a dry film thickness of 0.70-0.80 mil. Total dry film thickness shall be 0.90-1.10 mil.</p> <p><b>Reverse side of panel:</b> Primer shall have a dry film thickness of 0.20-0.30 mil. Top coat shall have a dry film thickness of 0.30-0.40 mil. Total dry film thickness 0.50-0.70 mil.</p> <p>Contains 70% Kynar 500® resins. All measurements are in accordance with ASTM D 1005.</p>

PVDF (KYNAR 500®) PAINT PERFORMANCE		
<b>Salt Spray Resistance</b>		
ASTM B 117	1,000 Hours	No loss of adhesion >1/8" from score, no blisters
<b>Humidity Resistance</b>		
ASTM D 2247	2,000 Hours	No field blisters
<b>Abrasion Resistance</b>		
ASTM D 968	Method A	65 ± 10 liters
<b>Chalk Resistance</b>		
ASTM D 4214	2,000 Hours	No chalking greater #8 rating
<b>Direct and Reverse Impact Adhesion</b>		
ASTM D 2794	80 in-lbs	No visible paint removal with cellophane tape
<b>Flame Spread Rate</b>		
ASTM E 84		Class A coating
<b>Cross Hatch Adhesion</b>		
ASTM D 3359		No loss of adhesion
<b>Color Change</b>		
ASTM D 2244	2,000 Hours	No more than 5 hunter units



Antioch, TN: 800.251.8508  
 Rogers, MN: 800.328.9316  
 Jefferson, OH: 800.321.5833  
 Longmont, CO: 800.289.7663  
 Sellersburg, IN: 800.999.7777  
 Detroit Lakes, MN: 888.594.1394  
 Independence, MO: 800.747.0012

Temple, TX: 800.543.4415  
 Bay City, MI: 888.777.7640  
 Mocksville, NC: 800.228.6119  
 Rock Island, IL: 800.747.1206  
 Fort Smith, AR: 877.452.3915  
 Orwigsburg, PA: 800.544.2577  
 Jacksonville, FL: 800.394.4419

Kent, WA: 800.431.3470  
 Fontana, CA: 800.782.7953  
 Spokane, WA: 800.572.6565  
 Woodland, CA: 800.759.6019  
 Anchorage, AK: 866.640.7663