

# IMPORTANT

THIS BOOK CONTAINS IMPORTANT INFORMATION ON:

1. INSTALLATION
2. CARE & MAINTENANCE
3. WARRANTY

YOU SHOULD READ THESE INSTRUCTIONS PRIOR TO THE INSTALLATION OF YOUR BOOTH. FAILURE TO DO SO, COULD CAUSE DAMAGE TO THE PRODUCT.



**ENTERPRISES, INC.**

**626-448-1449**  
**FAX 626-448-3598**

# INSTALLATION

1. Washing the building with any automotive type soap and water will remove the road dirt.
2. B.I.G. requires that you apply a moisture barrier of silicone sealer to the floor perimeter after the booth is set in place. (See Exhibit A).
3. It is **very important** that your pad be level to allow for proper door and sliding window alignment and operation. Also allowing for proper roof and window drainage. If you **TWIST or RACK** the Booth when anchoring it to your pad, it may cause the door or window to **bind** which could cause poor door operation, and excessive wear to the door track and door rollers. Also, caulked seams will appear to crack.
4. After your Building is set (level) or slightly angled toward the roof drain, check the door and window operation before and after anchoring for ease of operation and locking. (See Adjustment Instructions.)

## EXHIBIT A



### WARNING

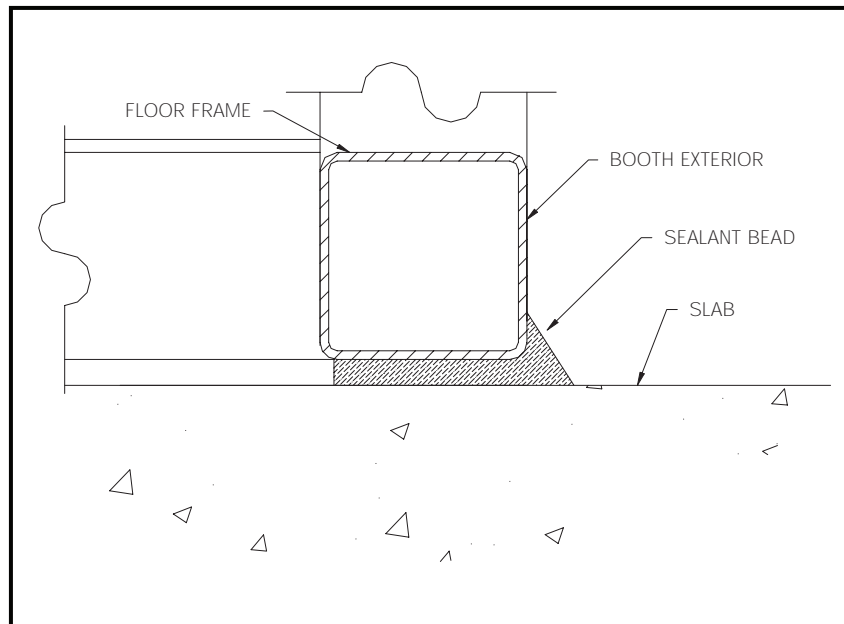
If water is allowed to seep between the booth and the pad damage may occur over time. This damage is not covered by the warranty.

The booth must be sealed to the pad to prevent water from entering.

Prior to setting the booth on the pad, two ½” beads of sealant must be placed under the floor base as shown in pic 1.

After setting the booth on the slab and bolting in place, an additional perimeter seal must be made. This is achieved by running a continuous bead of sealant around the exterior perimeter of the booth. There should not be any gaps in the sealant.

For booths with a no floor construction an additional bead of sealant must be run around the interior perimeter.



Pic. 1 - Sealant Bead (Any Construction Grade Sealant will work.) This item should be inspected and maintained once a year.

## 4.3.4 Kwik Bolt TZ Expansion Anchor

4.3.4.1	Product Description
4.3.4.2	Material Specifications
4.3.4.3	Technical Data
4.3.4.4	Installation Instructions
4.3.4.5	Ordering Information
4.3.4.6	Sample Calculation

### 4.3.4.1 Kwik Bolt TZ Product Description

The Kwik Bolt TZ (KB-TZ) is a torque controlled expansion anchor which is especially suited to seismic and cracked concrete applications. This anchor line is available in carbon steel with zinc electroplated coating and 304 stainless steel versions. The anchor diameters range from 3/8 to 3/4 inch in a variety of lengths. Applicable base materials include normal-weight concrete, structural lightweight concrete, and lightweight concrete over metal deck.

#### Guide Specifications

Torque controlled expansion anchors shall be Kwik Bolt TZ (KB-TZ) supplied by Hilti meeting the description in Federal Specification A-A 1923A, Type 4. The anchor bears a length identification mark embossed into the impact section (dog point) of the anchor surrounded by four embossed notches identifying the anchor as a Hilti Kwik Bolt TZ in the installed condition. Anchors are manufactured to meet one of the following conditions:

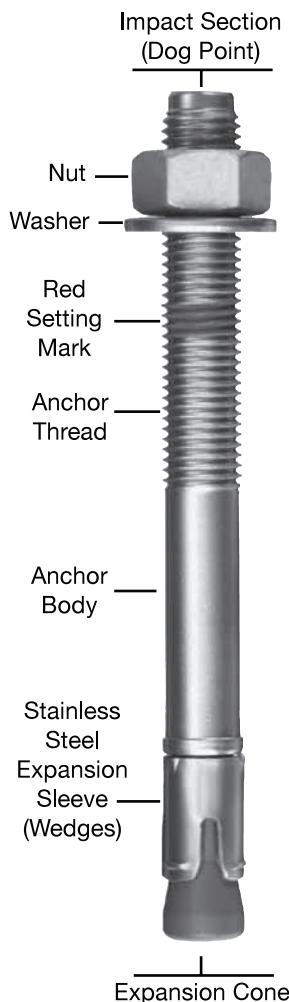
- The carbon steel anchor body, nut, and washer have an electroplated zinc coating conforming to ASTM B 633 to a minimum thickness of 5  $\mu$ m. The stainless steel expansion sleeve conforms to AISI 316.
- Stainless steel anchor body, nut and washer conform to AISI 304. Stainless steel expansion sleeve conforms to AISI 316.

#### Product Features

- Product and length identification marks facilitate quality control after installation.
- Through fixture installation and variable thread lengths improve productivity and accommodate various base plate thicknesses.
- 316 Stainless Steel wedges provide superior performance in cracked concrete.
- Ridges on expansion wedges provide increased reliability.
- Mechanical expansion allows immediate load application.
- Raised impact section (dog point) prevents thread damage during installation.
- Bolt meets ductility requirements of ACI 318-05 Section D1.

#### Installation

Drill hole in base material to the appropriate depth using a Hilti carbide tipped drill bit. Drive the anchor into the hole using a hammer. A minimum of four threads must be below the fastening surface prior to applying installation torque. Tighten the nut to the recommended installation torque.



#### Listings/Approvals

**ICC-ES (International Code Council)**  
ESR-1917

**FM (Factory Mutual)**  
Pipe Hanger Components for Automatic  
Sprinkler Systems (3/8" - 3/4")

**UL (Underwriters Laboratories)**  
Pipe Hanger Equipment for Fire  
Protection Services (3/8" - 3/4")

#### Supplemental Design Provisions for ACI 318-05 Appendix D

Design strengths are determined in accordance with ACI 318-05 Appendix D and ICC Evaluation Service ESR-1917 Hilti Kwik Bolt TZ Carbon and Stainless Steel Anchors in Concrete. The relevant design parameters are reiterated in Tables 1, 2, and 3 of this document. Supplemental provisions required for the design of the KB-TZ are enumerated in Section 4.0 of ESR-1917 (DESIGN AND INSTALLATION). Note that these design parameters are supplemental to the design provisions of ACI 318-05.

# **CARE AND MAINTENANCE** **OF YOUR B.I.G. PRODUCTS**

B.I.G.'s products are constructed of the finest material and workmanship, giving you years of quality service.

Normal housekeeping is important for the product's function and long life. Dirt should never be allowed to accumulate in the door, window tracks or jambs. Dirt buildup could cause these items to become misaligned, and not to operate as designed. Misalignment will also cause excessive wear of door and window tracking systems, and possible injury.

**BULLET RESISTANT GLAZING, ACRYLIC & POLYCARBONATE GLAZING: CAUTION: NO CHEMICAL HOUSEHOLD CLEANERS SHOULD EVER BE USED TO CLEAN ACRYLIC. THESE CHEMICALS WILL CREATE A CHEMICAL REACTION WHEN USED. THEY CAN CAUSE CRACKING OR CRAZING.** Remove grit on outside by flooding with water before washing. Use mild detergent and warm water mixed in a spray bottle to clean the surface. B.I.G. has provided one can of its especially formulated booth cleaner. The can is labeled as "**B.I.G. BOOTH CLEANER**". This cleaner can be used to clean ANY ACRYLIC or glass, including all stainless steel. This cleaner will not damage the acrylic surface or any painted surface and leaves a protective coating for easier maintenance. We have provided a re-order form should you need to purchase more cleaning solution.

**AIR CONDITIONER MAINTENANCE:** A/C units must be serviced regularly. Consult your owner's manual. Verify that A/C units are draining from roof, and that puddles are not accumulating from condensation. Roofs must be kept free of debris, to allow for proper drainage.

Your wall mount air conditioner unit was chosen for its quality and performance. However, should you feel that there is a warranty problem you can call the numbers shown on the Warranty Report (W1).

Give them the serial number of the unit and the installation date and a service technician will respond promptly.

**AIR CONDITIONER:** Contact your local A/C manufacturer for service should service be required. The manufacturer's warranty booklet and installation papers are sent with your booth.

If your Air Conditioner is shipped unattached and needs installation on site, we require that you contact a certified air conditioning service to do the startup on your unit, this protects the warranty. Without a licensed air conditioner professional doing the installation there may be NO warranty from the air conditioner manufacturer. BIG Enterprises, Inc. is not responsible for the warranty. The manufacturer of the HVAC is responsible.

DOORS: The B.I.G. solid steel door system is designed to withstand the use and abuse associated with this type of product.

When you first receive your booth, you may find that gentle pressure is needed against the jamb to release the lock, and to re-lock the door. This is due to new weather stripping, which insures the best possible moisture protection.

Please refer to B.I.G. Adjustment Instruction Sheets. Keep doors adjusted properly and be sure that the Track System is fully engaged in the B.I.G. threshold to prevent water intrusion. Replace door bumper or weather stripping, if excessively worn or missing. Outside door tracks must be kept clear of all dirt and debris, in order for door to operate properly.

SWING DOORS: B.I.G. takes great care to see that every door is properly aligned to insure proper operation of the lock and strike. Heavy B/R doors should be inspected often to make sure the knuckle hinge is securely fastened to the jamb. Great care must be taken in windy conditions to make sure the door will not exceed its opening arch, or hit the building side. The door will rack if it hits the building and cause problems with the lock and latch.

PAINTED SURFACES: B.I.G. uses the highest quality industrial high solids polyurethane solvent-based paint, which is extremely hard and durable. Should any scratches occur, it is important that those affected areas be touched up immediately in order to prevent corrosion. Should corrosion occur, apply a rust remover or a rust encapsulator to the area, then paint.

**All painted surfaces should be washed regularly to remove normal dirt and grime. Polishing of your product is recommended at least every 12 months, using an automotive type polish. Polishing helps protect the product from UV rays and fading (See Exhibit C).**

ROOF: The metal roof has been protected with an elasticmeric, heat reflective roof seal to prevent any water leak. Roofs are water tested prior to shipment to our customers. We use a 3-step process to assure that surfaces have been sealed from the elements. We can not warranty the roof if you have penetrated the roof for any reason, and/or if you shovel snow, which may break the membrane roof coating. Leaves and trash should be kept away from all drains and scuppers, so water drains freely from the roof

STAINLESS STEEL: B.I.G.'s Stainless Steel products are constructed with 304 Stainless Steel. Normal house cleaning and care of the material is necessary.

To Clean: Using a mild soap and water, wash the stainless steel as you would your car. A soft dust-free non-abrasive rag will need to be used. After drying off the product, use our B.I.G. Booth Cleaner/Conditioner to apply a wax-type film which will help in preventing discoloration and surface corrosion. B.I.G. Booth Cleaner was shipped with your booth and is available for purchase should you need additional supplies.

LIFTING EYES: SEE CAUTION ON PAGE 11.

STANDING WATER ON ROOF: SEE CAUTION ON PAGE 11.

# EXHIBIT B

## Door & Window Roller Track Operation & Maintenance

B.I.G. sliding doors and steel framed windows are suspended from a steel track that has been welded in place. The sliding doors and windows use roller assemblies containing steel ball bearings that require only occasional maintenance.

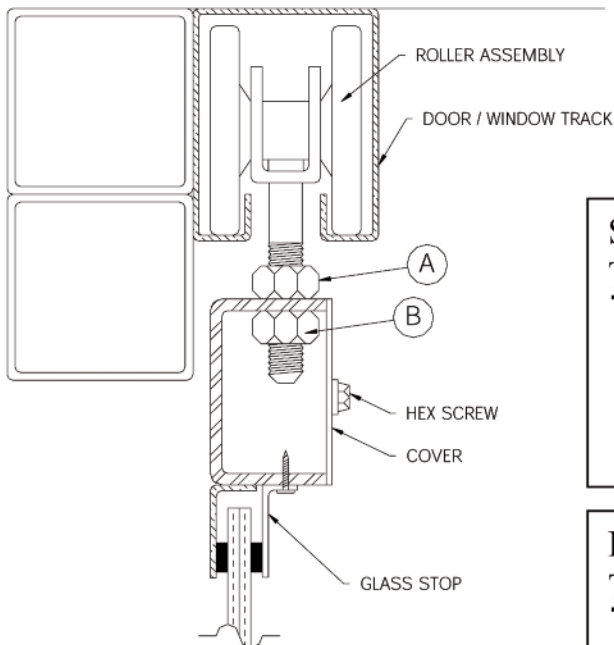
Should the door or window become miss-aligned it can easily be re-aligned by a simple adjustment of the hold down nuts as follows:

1. Remove the hex head screws, and the cover.
2. **To Raise the Door / Window:** Loosen nut "A" and tighten nut "B"
3. **To Lower the Door / Window:** Loosen nut "B" and tighten nut "A"

**Caution:** When lowering the door / window do not allow the assembly to rub on the floor or guide channel

4. When adjustment is complete tighten both nuts "A" and "B"
5. Reinstall the cover and hex head screws.

Proper door / window alignment can be verified by sighting the vertical edge of the assembly against the jamb. Replacement door / window rollers are available through B.I.G. Enterprises, Inc.



### STANDARD CONSTRUCTION

#### Tools Required

- (2) 3/4" Open ended wrenches
- (2) 13mm Open ended wrenches  
(for small windows with plastic roller assemblies)
- (1) 5/16" Hex Nut driver

### BULLET RESISTANT CONSTRUCTION

#### Tools Required

- (2) 15/16" Open ended wrenches
- (1) 5/16" Hex Nut driver

# **EXHIBIT C**

## **INDUSTRIAL FINISH**

---

### **Graffiti Removal**

#### **With B.I.G.'s 6400 Series High Solid Polyurethane**

The 6400 Series is a polyester-aliphatic polyurethane coating. It offers excellent chemical and abrasion resistance. Additionally, it has excellent color and gloss retention for exterior applications. Complete cure to final film properties occurs seven days after coating is applied. After this time, the 6400 Series resists attack by most solvents including lacquer thinner, naphtha, xylenes and most ketones. After coating is cured, an application of an automotive wax, wiped and buffed, will help prevent most graffiti from adhering to painted surface. This will make clean-up easier.

#### **Aerosol Spray Paint Removal**

Aerosol spray paint which is applied over the 6400 Series can be removed by wiping surface with graffiti removal products. Typically these products are designed to remove ink, lipstick, spray paints or other forms of graffiti. Follow instructions on the product label.

#### **Stains which Penetrated Beneath Film Surface**

Certain types of permanent markers will penetrate beneath the surface of a paint film. If after use the aforementioned graffiti removal process, a stain remains below paint surface an abrasive cleaner can be used to remove stains. Kitchen cleansers or automotive rubbing compounds should be applied to moist rag and use to carefully buff out stain. Remember these abrasive do remove some of the paint surface so check frequently to prevent excessive removal of paint. When stain is no longer visible, wipe surface clean. An application of an automotive wax, wiped and buffed, will bring back surface to original gloss or luster”.



# CAUTION

**CAUTION:** If your booth was manufactured with **LIFTING EYES AND MUST BE REMOVED** after offloading. It is required that the bolts provided replaced the removed eyes and the bolts are sealed to prevent the possibility of water leaks, even though, our eyes are threaded into a seal by us.

**CAUTION:** Never let water stand on a roof. Standing water acts as a magnifier and can deteriorate the roof membrane for a very short period of time. **BOOTHS MUST SLOPE TOWARD THE DRAINS** and drains must be kept open. Never shovel snow from a flat roof as this could rip the roof seal.

**CAUTION:** Closing either the sliding doors or swing doors with the deadbolt extended will damage the doorjamb even though, we have backed all sliding doorjamb with 11 gauge steel.

**CAUTION:** Roof mount air conditioning units have freeze protection that **AUTOMATICALLY SHUTS THE COMPRESSOR OFF** when it senses the coils are freezing. One cause for freezing: The door left open in extremely hot & humid days with the A/C on full cold, or the thermostat is set at a very low temperature.

**CAUTION:** Heaters can sometimes overheat which will trip the circuit breaker on the heater face (see instructions provided). The heater should remain off at least 2 minutes before pushing the reset button located on the heater.

**CAUTION:** Any **THERMOSTAT SHOULD NOT BE SET LOWER THAN 68 DEGREES**. This will cause the air conditioner unit **NOT TO CYCLE**. Therefore the air conditioner will freeze up and **BLOW HOT AIR**.

**CAUTION:** If your booth was manufactured with a standing seam roof. The **LIFTING EYES MUST BE** removed and the panels must be inserted immediately. The installation of panels will not allow water to enter the roof cavity. The roof felt paper can be exposed to the sun no longer than 30 days.

**CAUTION:** Stainless Steel. In areas of high concentrated diesel (train stations), landscaping chemicals, and in heavy salt area usage, you may notice what appears to be rust. **IT IS NOT**. It is contamination in the surface of the stainless which can be removed by better maintenance.

**CAUTION:** **TILE FLOORS MUST HAVE A CHAIR MAT WHEN USING A ROLLING CHAIR.**

**CAUTION:** **DAMAGED FLOORING IS NOT COVERED UNDER WARRANTY.**

**CAUTION:** Roofing underlayment cannot be exposed for any longer than 30 days. This underlayment is used on standing seam roofs only.

**CAUTION:** Sliding / Swing Door thresholds – If Door Threshold contains a non-skid coating, this coating will need to be inspected and re-applied with an approved non-skid coating as needed.

# WARRANTY

**LIMITED WARRANTY.** Seller warrants that the product sold under its contract conforms to the approved drawings or other description furnished or agreed to by the Seller and Buyer. Seller makes no representations or warranty of any other kind, express or implied, with respect to the product, whether as to merchantability, fitness for a particular purpose or any other matter.

**MANUFACTURER'S WARRANTY.** As stated above, Seller makes no representations or warranty of any kind, express or implied, as to any and all chemical systems or other equipment, goods or components which are, or are to be, attached to the Seller's product and which are not manufactured by Seller; as to such goods, equipment, systems and components, Buyer's exclusive remedy is against and obtainable only from the manufacturer of such items as warranted, if at all by the manufacturer (the "Manufacturer's Warranty"). To the extent Seller is able to do so, Seller will provide any such Manufacturer's Warranty to Buyer, and, upon such an occurrence, Buyer must take whatever steps are necessary to perfect or enforce the Manufacturer's Warranty, and, in any event, Buyer shall have no claim against Seller in the event the manufacturer is for any reason unwilling or unable to perform under the terms of the applicable Manufacturer's Warranty.

**NOTICE OF CLAIMS.** Immediately upon receipt of the product, Buyer shall inspect them. All claims, including claims for alleged defective product, must be made within fifteen (15) days after Buyer learns of facts upon which such claim is based, and in no event later than one year after Buyer's receipt of the product. All claims not made in writing and received by Seller within the time period specified above shall be deemed waived.

**LOCATION OF WARRANTY REPAIR OR REPLACEMENT.** At the election of the Seller, any warranty repairs or replacements shall be done at the Seller's factory or at a location agreed to by Seller, and at a price agreed to by Seller.

**LIMITATION ON WARRANTY REPAIR OR REPLACEMENT.** No warranty work, whether repair or replacement, will be done or honored by Seller in the event that Buyer has not fully paid Seller for the product. No Warranty will be done or honored by Seller in the event the product has been subjected to improper installation, abuse, vandalism, negligence of the Buyer, or for normal wear and tear of the product.

**LIMITATION OF LIABILITY. BUYER'S EXCLUSIVE REMEDY FOR CLAIMS ARISING HEREUNDER SHALL BE FOR DAMAGES. SELLER'S LIABILITY FOR ANY AND ALL LOSSES AND DAMAGES TO BUYER RESULTING FROM ANY CAUSE WHATSOEVER INCLUDING . SELLER'S NEGLIGENCE, ALLEGED DAMAGED OR DEFECTIVE PRODUCT, IRRESPECTIVE OF WHETHER SUCH DEFECTS ARE DISCOVERABLE OR LATENT, SHALL IN NO EVENT EXCEED THE PURCHASE PRICE OF THE PARTICULAR PRODUCT WITH RESPECT TO WHICH LOSSES OR DAMAGES ARE CLAIMED, OR, AT THE ELECTION OF SELLER, THE REPAIR OR REPLACEMENT OF DEFECTIVE OR DAMAGED PRODUCT. IN NO EVENT, INCLUDING IN THE CASE OF A CLAIM OF NEGLIGENCE, SHALL SELLER BE LIABLE FOR INCIDENTAL OR CONSEQUENTIAL DAMAGES.**

## **BULLET RESISTANT GLASS**

### **-WARRANTY-**

Bullet resistant glazing is designed and tested by the glazing manufacturer to defeat a bullet up to the ballistic range of the bullet as shown in the NIJ table or UL table. The glazing installed in your booth meets or exceeds your specified BR level.

B.I.G. Enterprises, Inc. has test certifications on all levels of glazing used in the booths as specified by you, the customer.

Each piece of bullet resistant glazing or glass-clad polycarbonate glazing is warranted for a period of one (1) year from the date delivered to the site.

The glass manufacturer will deliver, without charge, a replacement piece of BR glazing to the jobsite, for installation by others, if the manufacturer determines the BRA glazing is defective.

While BR glazing will defeat a bullet, it is still glass and any blow from an object may cause the glazing to crack. This is not a warranty issue and will not be covered. Damage to the glazing will reduce the level of bullet resistant protection provided by the glazing.

Partial covering of the glazing with paper or painted areas (signs, etc.) should be avoided. Such coverings act as heat traps and may contribute to glazing failure (cracking) due to thermal stresses caused by increased temperature of the covered areas.

CAUTION: Placing portable space heaters on the shelf or near the bullet resistant glazing may also lead to glazing failure (cracking) due to thermal stresses.

Your warranty is the same warranty that B.I.G. Enterprises, Inc. receives from its glazing supplier.

See the Care and Maintenance section for instructions on cleaning BR glazing.

## **WARRANTY REPORT INSTRUCTIONS**

1. Tear out the B.I.G. Warranty Verification Form (W1)
2. Complete the form and mail, fax, or email to B.I.G. Enterprises Inc.
3. Note: Should your warranty involve air conditioning or heating, call the number shown on the form. The manufacturer will schedule a service call and/or replace the unit.

Every warranty presented to B.I.G. is reviewed by its top Management to assure that all manufacturing quality procedures are followed and to determine if manufacturing procedures should be re-evaluated.



# B.I.G. WARRANTY VERIFICATION (W1)

Date: \_\_\_\_\_

Name: \_\_\_\_\_ Company: \_\_\_\_\_

Phone #: \_\_\_\_\_ Fax #: \_\_\_\_\_

B.I.G. Booth Serial #: \_\_\_\_\_ Delivery Date: \_\_\_\_\_

Contact Person on-site: \_\_\_\_\_ Phone #: \_\_\_\_\_

Should you have any warranty problem with the following components in your B.I.G. booth, we suggest you contact the component manufacturer directly for warranty service.

- A. Marley Electric Heaters - heaters (Model A2540T or A2515T) 1-800 642 HEAT
- B. GE A/C /Heat 1-800 GE CARES
- C. Dometic A/C (roof mount RV Style) 1-800 216 5115
- D. Trane A/C 626 435 1153
- E. Carrier A/C 1-866 754 4822
- F. Arco Aire 1-877 427 4357
- G. Friedrich 1-800 541 6645
- H. American Standard A/C www.americanstandardair.com Stan 760 412 2365
- I. Coleman (Roofmount RV style) RVP\_support@airxcel.com 316-832-4357
- J. Fujitsu 866-952-8324

Nature of Warranty Complaint: \_\_\_\_\_

\_\_\_\_\_

\_\_\_\_\_

\_\_\_\_\_

Do you have pictures: \_\_\_ Yes \_\_\_ No \_\_\_ N/A

If yes, E-mail pictures to: [Kathy@bigbooth.com](mailto:Kathy@bigbooth.com)

If it is determined that the above warranty is not covered by B.I.G. Warranty Policy or by its vendor's warranty, you agree to pay the costs to correct the problem or the cost of any service call.

Please fax this sheet to FAX #(626) 448 3598, or email to above.

By: \_\_\_\_\_  
Signature

\_\_\_\_\_  
Print Name

*We Build Your Image*

B.I.G. Enterprises, Inc. • 9702 E. Rush St., So. El Monte, CA 91733 • (626) 448-1449

WORLD WIDE WEB: <http://www.bigbooth.com> • E-MAIL: [Info@Bigbooth.com](mailto:Info@Bigbooth.com)



**626•448•1449**

**FAX 626•448•3598**

**[www.BIGbooth.com](http://www.BIGbooth.com)**

B.I.G. ENTERPRISES, INC. has been manufacturing it's products since the early 1970's. Our primary objective is to produce the highest quality product in keeping with and exceeding industry standards, with further emphasis on custom appearance.

To this extent, our employees share in the profits of the Company which assure the quality objective that we achieve.

We choose only the best materials for our products, and provide quality components thereby, insuring our customers the source support that maybe needed after the products are installed.

We cannot control the actual installation of our products on site, however, we want to make sure that you understand that the installations we recommend, will insure your product will maintain it's quality for years of trouble free service.

We welcome customer comments and suggestions as our objectives include continued efforts to provide "user-friendly" products.

When re-ordering another B.I.G. product, always refer to this project and request our re order discount consideration.

B.I.G. thanks you for your business.





**ENTERPRISES, INC.**

**626•448•1449**

**FAX 626•448•3598**

**Website: [www.bigbooth.com](http://www.bigbooth.com)**

**Email: [info@bigbooth.com](mailto:info@bigbooth.com)**