

# EXHIBIT B

## Door & Window Roller Track Operation & Maintenance

B.I.G. sliding doors and steel framed windows are suspended from a steel track that has been welded in place. The sliding doors and windows use roller assemblies containing steel ball bearings that require only occasional maintenance. B.I.G. Inc. recommends to lubricate the bearings every (6) months, or as needed, to ensure smooth operation.

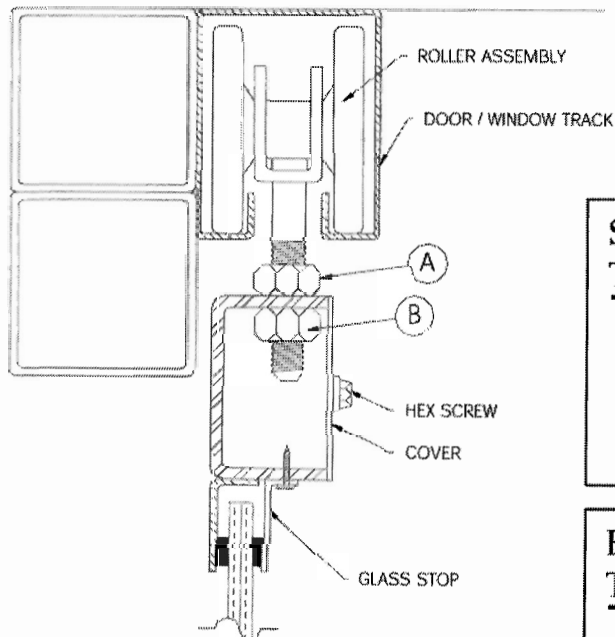
Should the door or window become miss-aligned it can easily be re-aligned by a simple adjustment of the hold down nuts as follows:

1. Remove the hex head screws, and the cover.
2. **To Raise the Door / Window:** Loosen nut "A" and tighten nut "B"
3. **To Lower the Door / Window:** Loosen nut "B" and tighten nut "A"

**Caution:** When lowering the door / window do not allow the assembly to rub on the floor or guide channel

4. When adjustment is complete tighten both nuts "A" and "B"
5. Reinstall the cover and hex head screws.

Proper door / window alignment can be verified by sighting the vertical edge of the assembly against the jamb. Replacement door / window rollers are available through B.I.G. Enterprises, Inc.



### STANDARD CONSTRUCTION

#### Tools Required

- (2) 3/4" Open ended wrenches
- (2) 13mm Open ended wrenches  
(for small windows with plastic roller assemblies)
- (1) 5/16" Hex Nut driver

### BULLET RESISTANT CONSTRUCTION

#### Tools Required

- (2) 15/16" Open ended wrenches
- (1) 5/16" Hex Nut driver